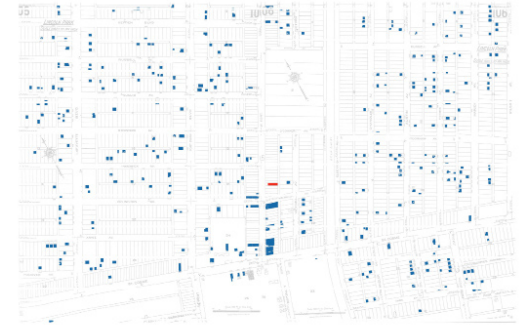




LINCOLN PARK - 1899

How did we get here?



LINCOLN PARK - 1924



LINCOLN PARK - 1950



The Event:

Between June 1922 and January 1923, Lincoln Park's population grew from 300 to 6,000. During such spontaneous growth, urban planning became an after thought. Nevertheless, the city remained prosperous for over 50 years. When bleak modern times call for a new plan of action, it's important for cities in similar situations to remember that destroying the legacy of the past will not necessitate prosperity for the future.